



Areas	Siding	Other
Facades	2427 ft <sup>2</sup>	243 ft <sup>2</sup>
Openings	383 ft <sup>2</sup>	0 ft <sup>2</sup>
Unknown (no photos)	-	0 ft <sup>2</sup>
<b>Total</b>	<b>2810 ft<sup>2</sup></b>	<b>243 ft<sup>2</sup></b>

Corners	Siding	Other
Inside Qty	2	-
Inside Length	13' 10"	-
Outside Qty	9	-
Outside Length	78' 5"	-

Siding Waste Factor	Area	Squares
Zero Waste	2427 ft <sup>2</sup>	24½
+10%	2670 ft <sup>2</sup>	26¾
+15%	2790 ft <sup>2</sup>	28
With Openings*	2777 ft <sup>2</sup>	28
Openings* +10%	3055 ft <sup>2</sup>	30¾
Openings* +15%	3193 ft <sup>2</sup>	32

\*Openings measurements exclude any individual openings greater than 33 ft<sup>2</sup> (e.g. patio doors, garage doors).

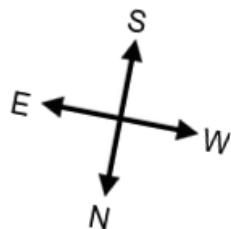
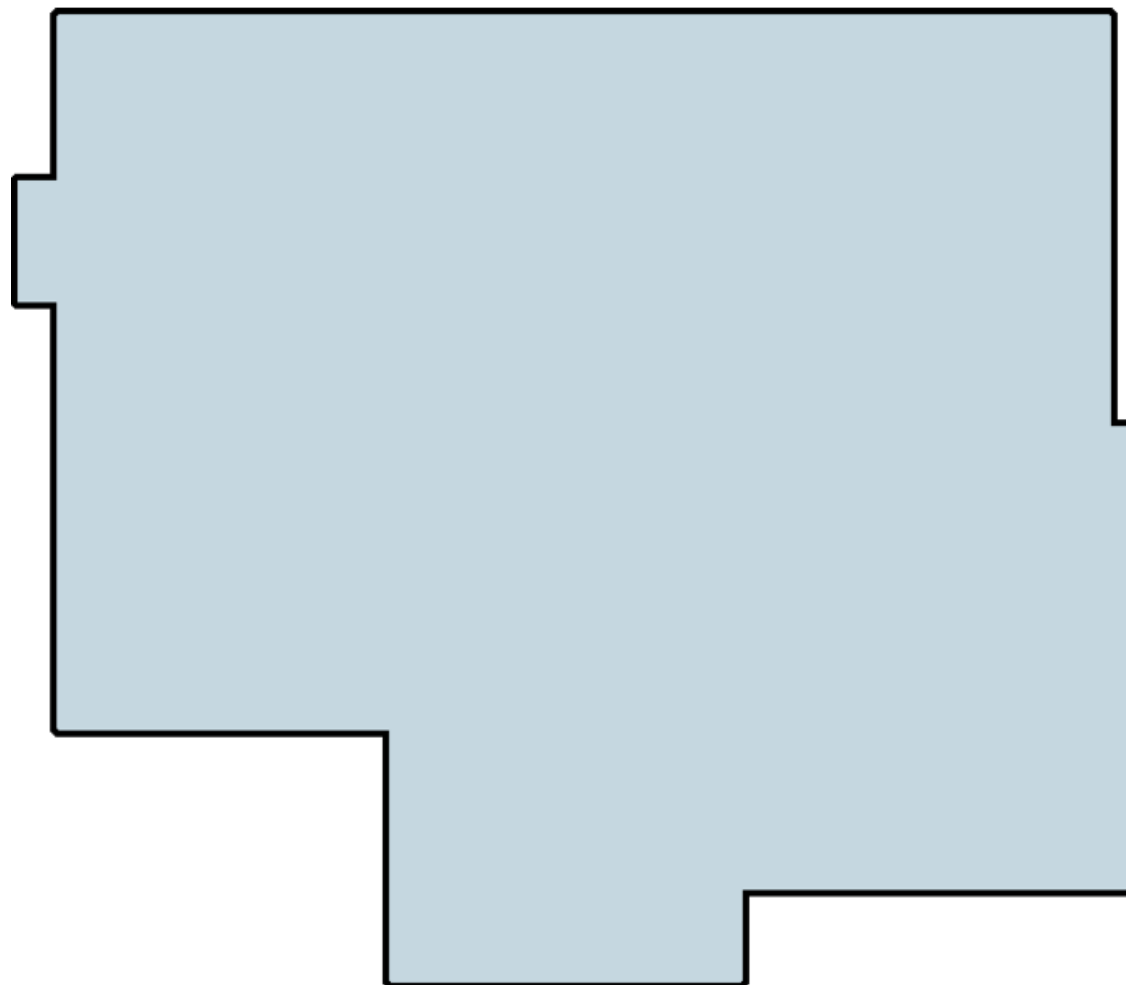
Trim	Siding	Other
Level Starter	260' 4"	16' 11"
Sloped Trim	25' 5"	12' 1"
Vertical Trim	73' 8"	171' 2"

Roofline	Length	Avg. Depth	Soffit Area
Eaves Fascia (Gutters)	128' 1"	-	-
Level Frieze Board	144' 8"	1' 8"	327 ft <sup>2</sup>
Rakes Fascia	112' 3"	-	-
Sloped Frieze Board	105' 5"	-	0 ft <sup>2</sup>

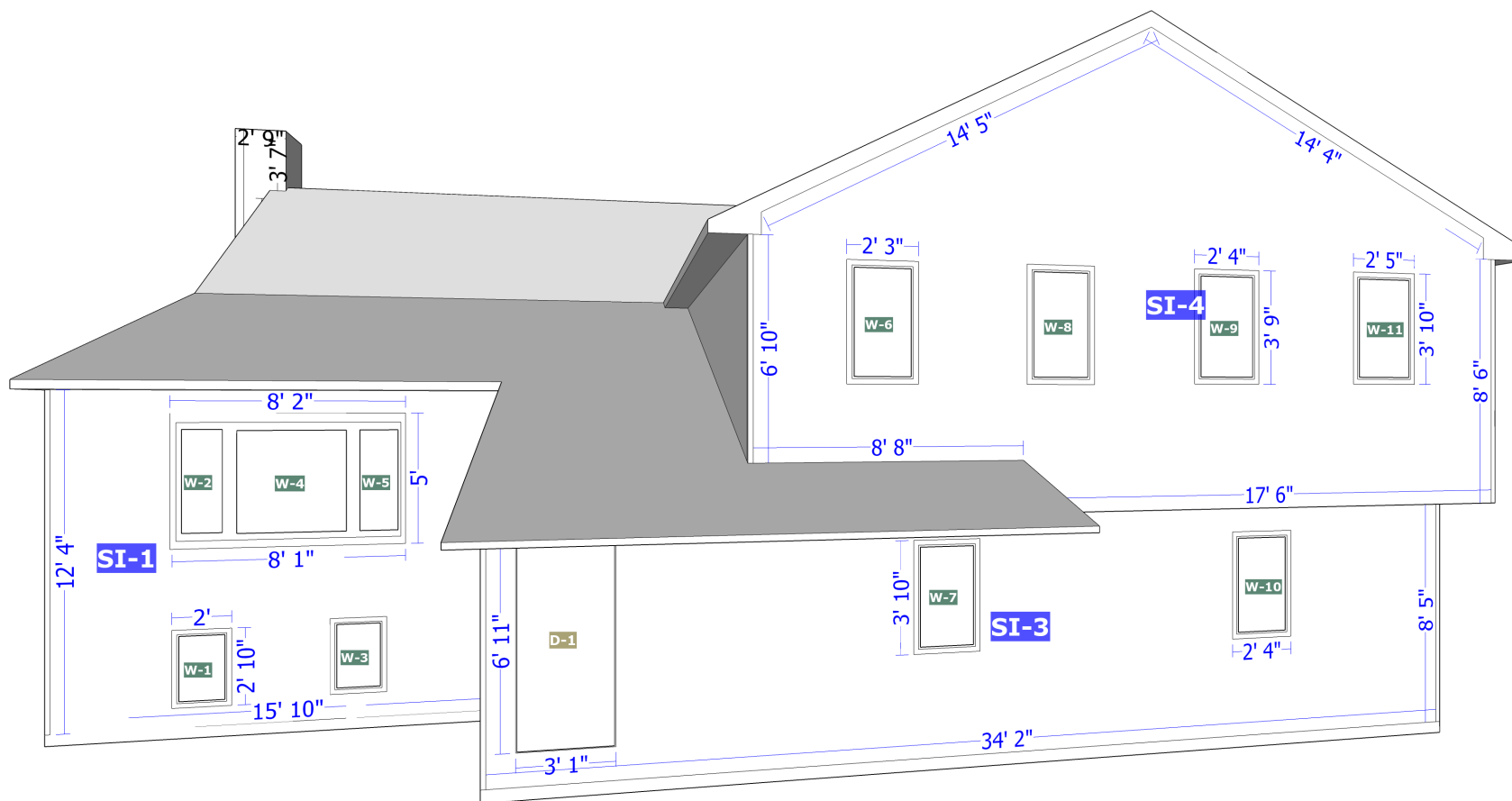
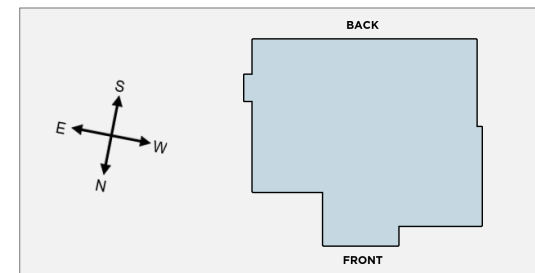
Openings	Siding	Other
Quantity	38	0
Tops Length	93' 3"	-
Sills Length	94' 7"	-
Sides Length	207'	-

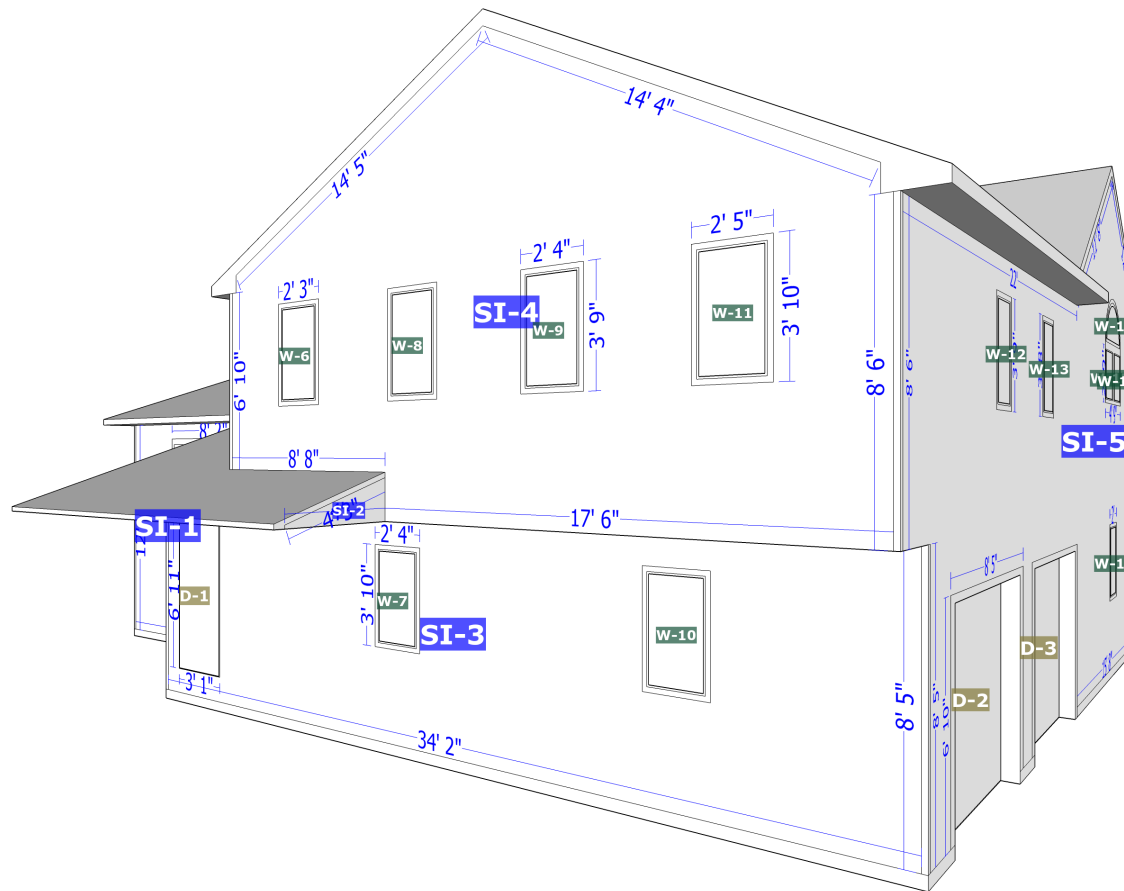
Accessories	Siding	Other
Shutter Qty	0	0
Shutter Area	0 ft <sup>2</sup>	0 ft <sup>2</sup>
Vents Qty	0	0
Vents Area	0 ft <sup>2</sup>	0 ft <sup>2</sup>

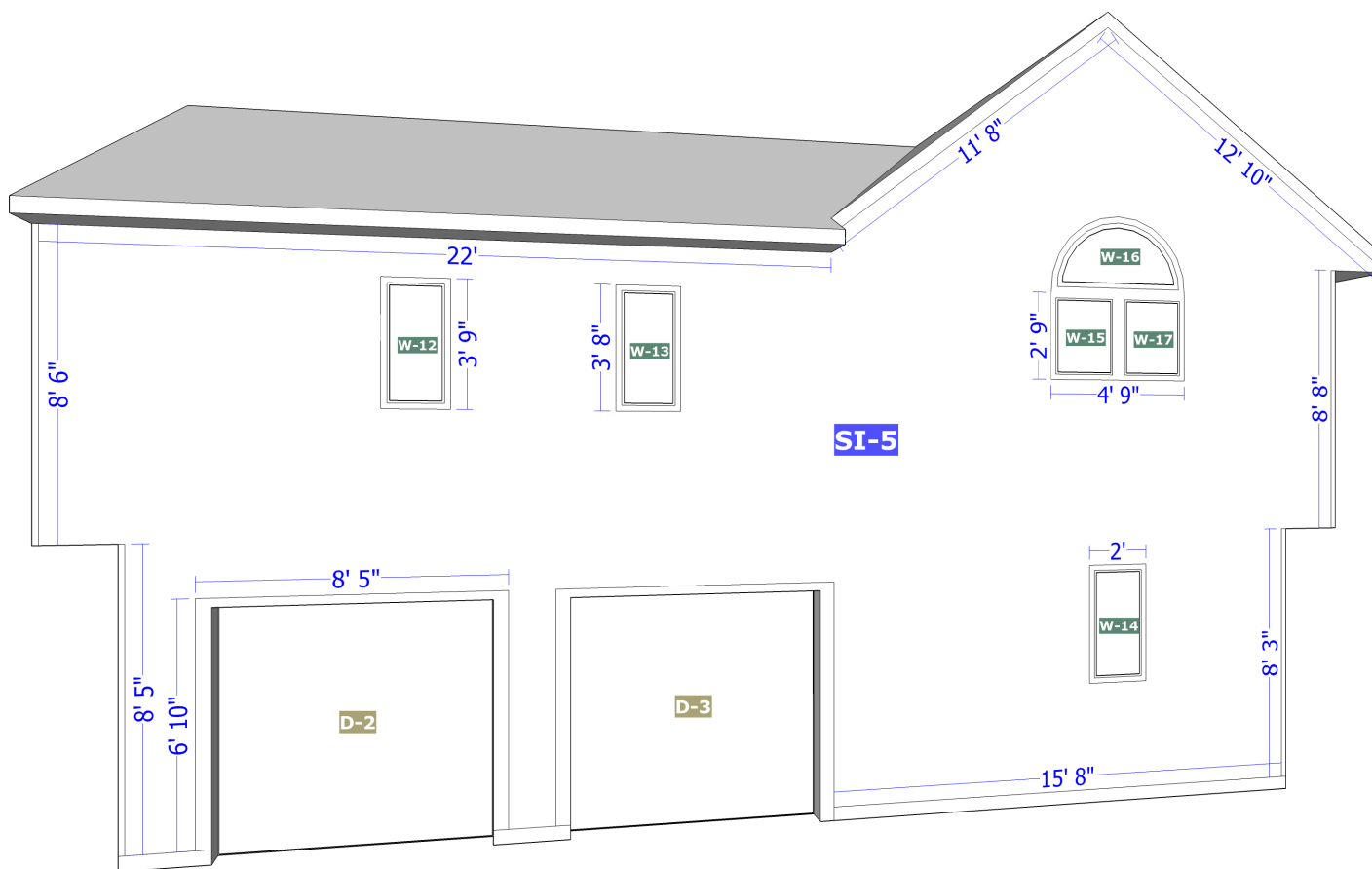
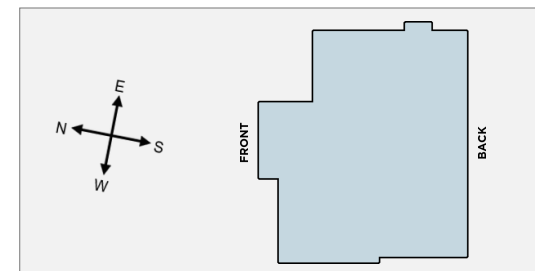
**BACK**

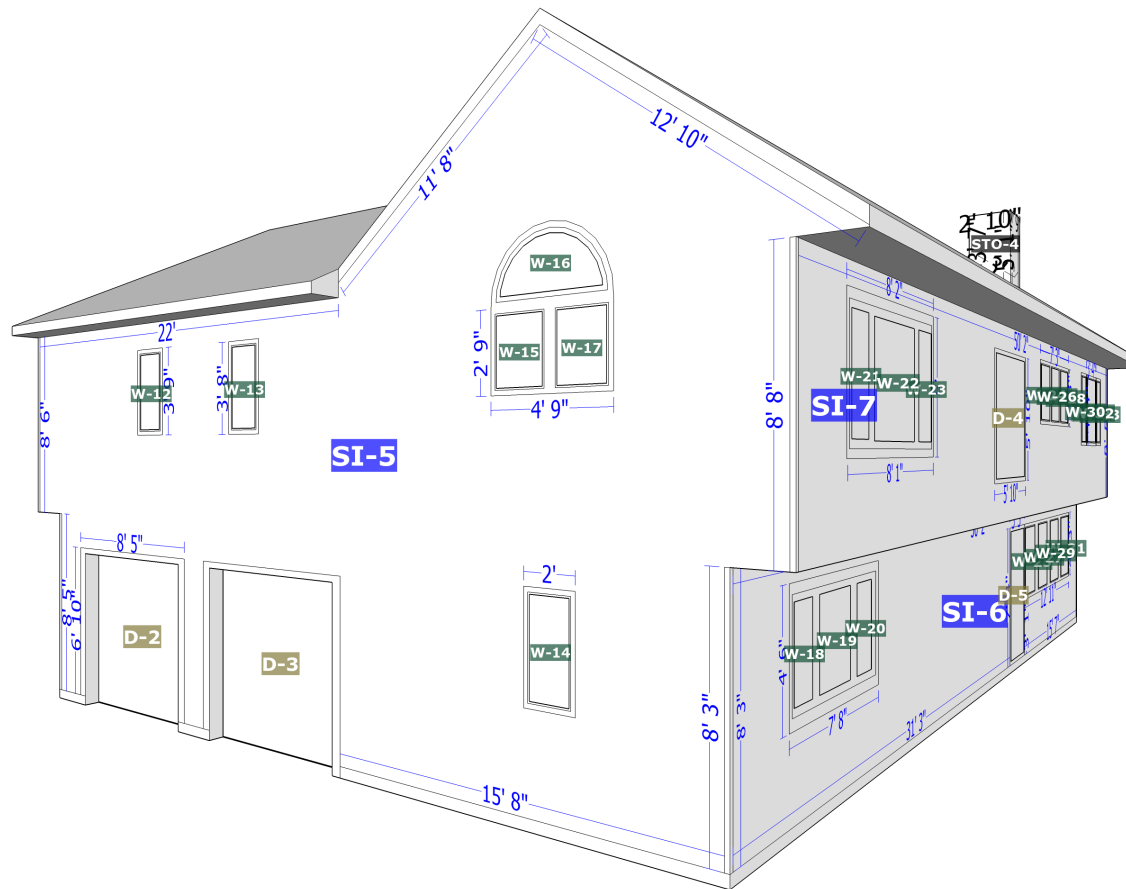
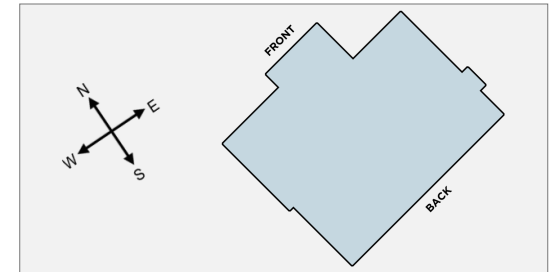


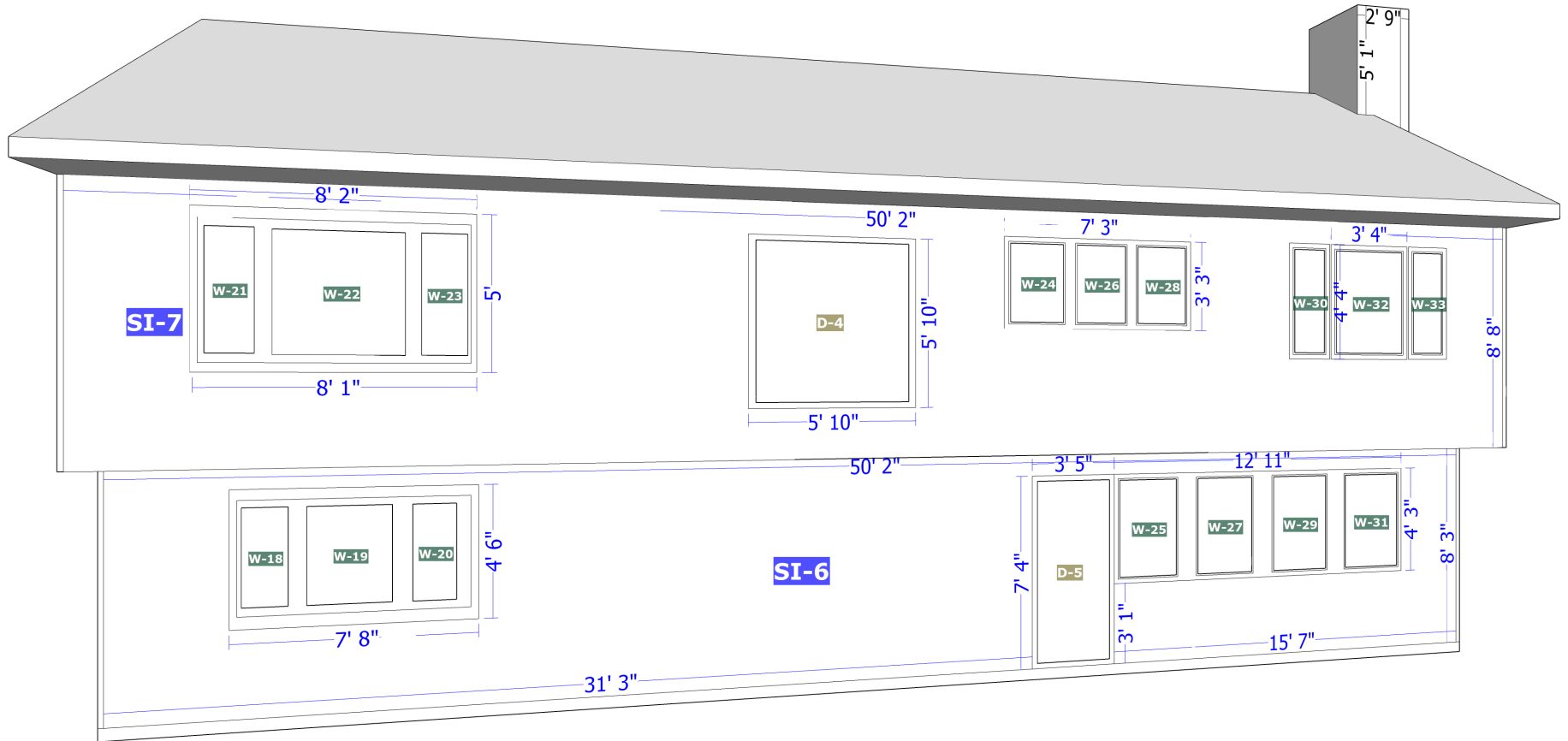
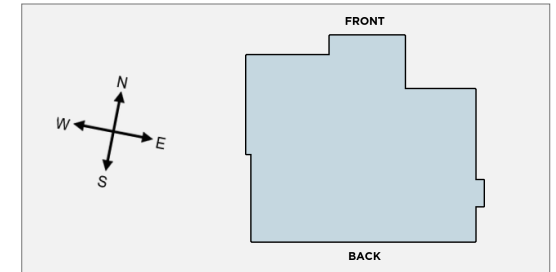
**FRONT**



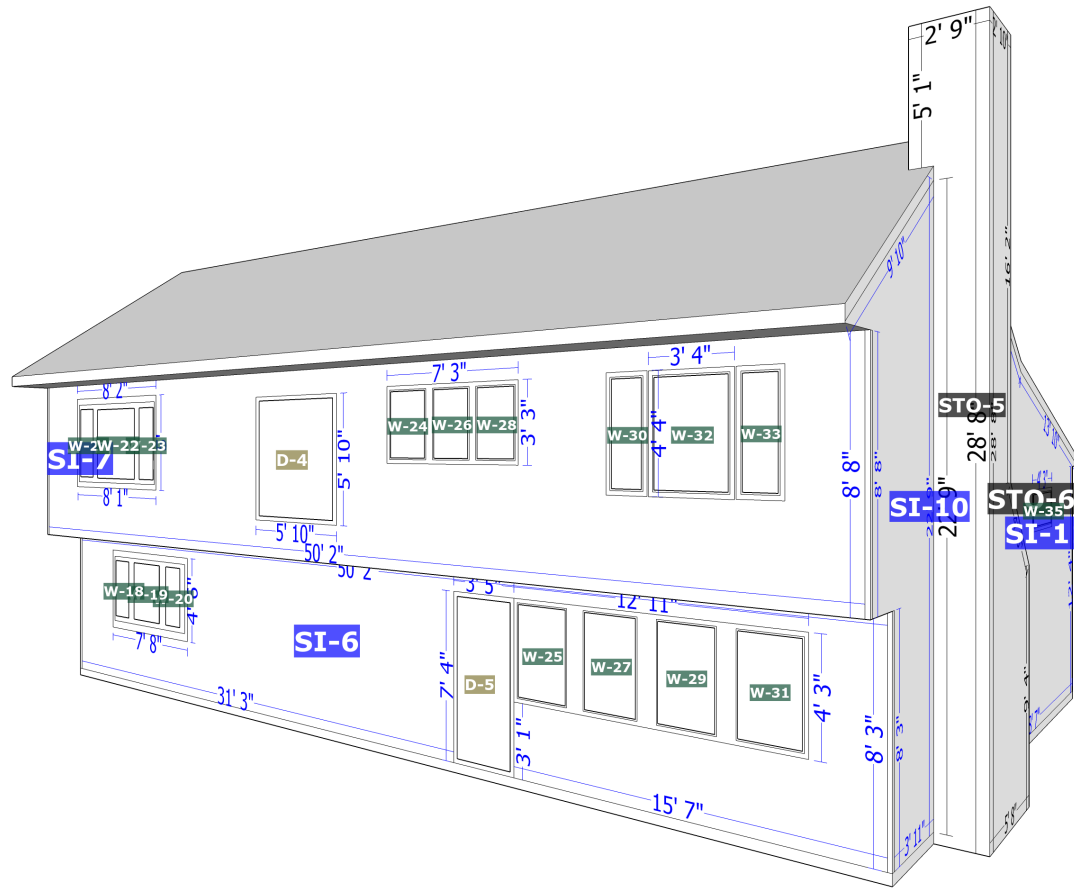
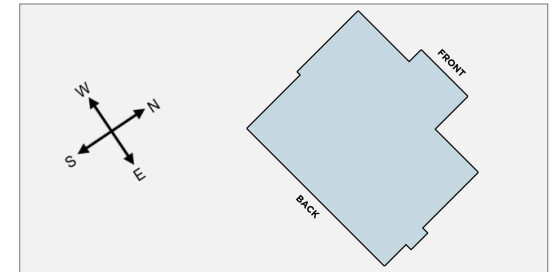


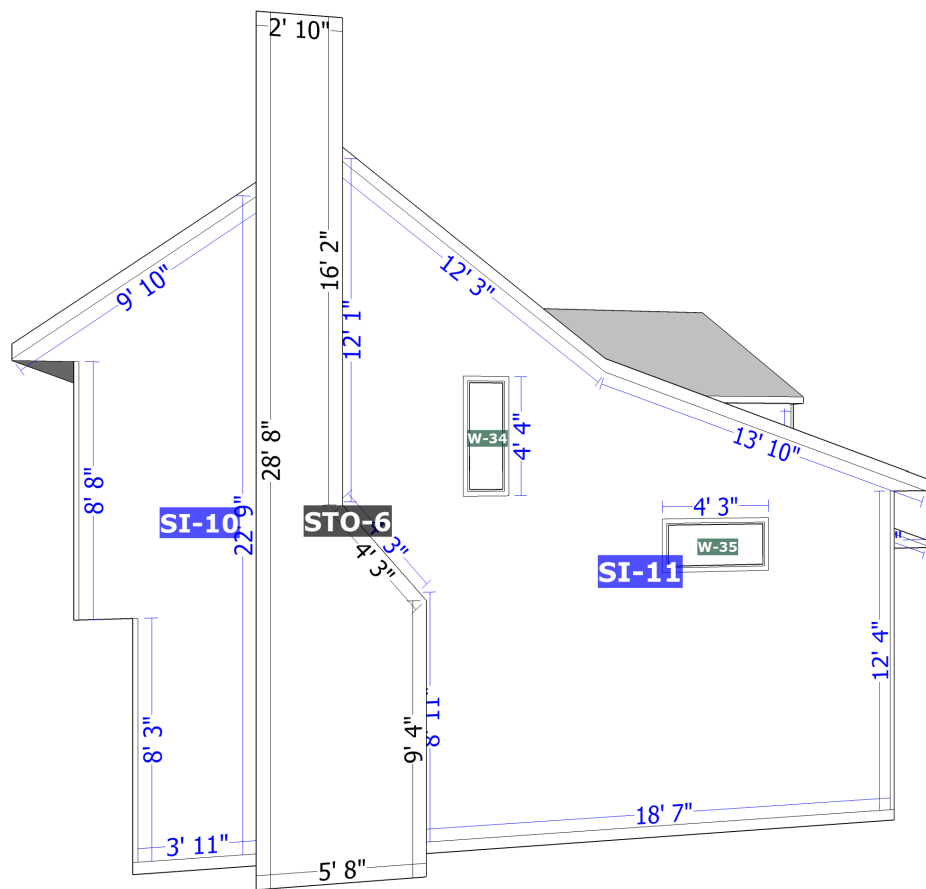
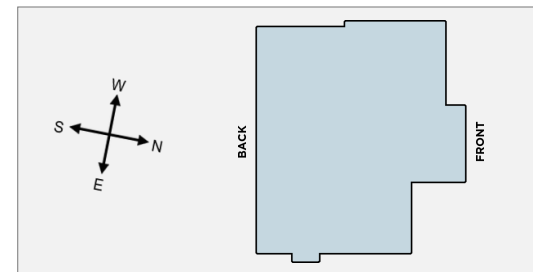


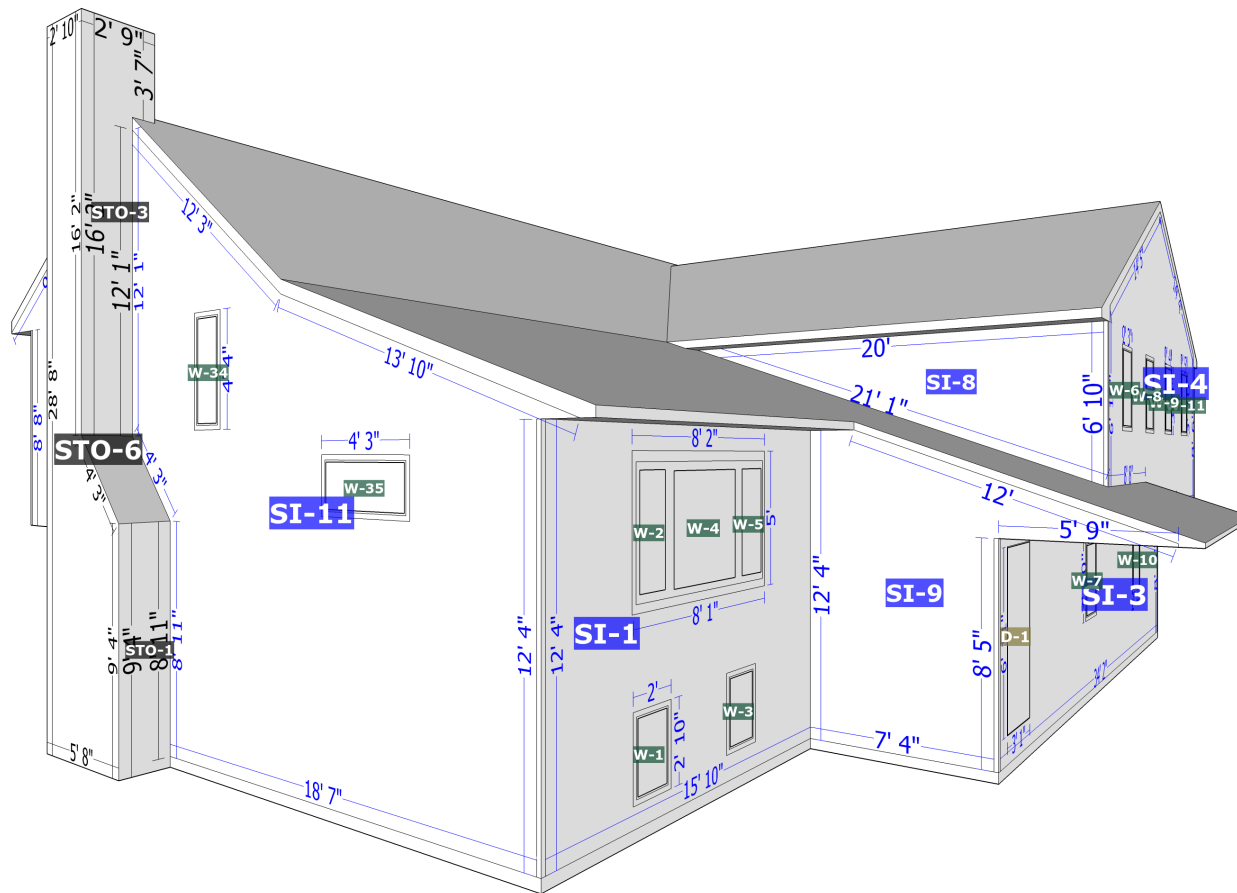
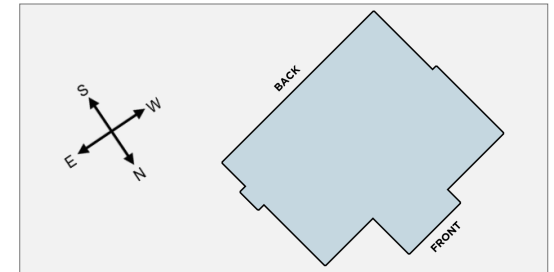












## Siding

Facade	Area	Inside Corners	Outside Corners	Openings	Shutters	Vents
SI-1	144 ft <sup>2</sup>	1	1	5	0	0
SI-2	3 ft <sup>2</sup>	1	0	0	0	0
SI-3	248 ft <sup>2</sup>	0	2	3	0	0
SI-4	274 ft <sup>2</sup>	1	2	4	0	0
SI-5	555 ft <sup>2</sup>	0	4	6	0	0
SI-6	301 ft <sup>2</sup>	0	2	8	0	0
SI-7	307 ft <sup>2</sup>	0	2	10	0	0
SI-8	68 ft <sup>2</sup>	0	1	0	0	0
SI-9	92 ft <sup>2</sup>	1	1	0	0	0
SI-10	107 ft <sup>2</sup>	0	2	0	0	0
SI-11	328 ft <sup>2</sup>	0	1	2	0	0
<b>Total</b>	<b>2427 ft<sup>2</sup></b>	<b>4</b>	<b>18</b>	<b>38</b>	<b>0</b>	<b>0</b>

**Stone**

Facade	Area	Openings	Shutters	Vents
STO-1	18 ft <sup>2</sup>	0	0	0
STO-2	8 ft <sup>2</sup>	0	0	0
STO-3	34 ft <sup>2</sup>	0	0	0
STO-4	12 ft <sup>2</sup>	0	0	0
STO-5	59 ft <sup>2</sup>	0	0	0
STO-6	112 ft <sup>2</sup>	0	0	0
<b>Total</b>	<b>243 ft<sup>2</sup></b>	<b>0</b>	<b>0</b>	<b>0</b>

## Facades

Facade	Area	Trim			Corners		Roofline		Openings		
		Level Starter	Sloped	Vertical	Inside	Outside	Level Frieze Board	Sloped Frieze Board	Tops	Sills	Sides
SI-1	144 ft <sup>2</sup>	15' 10"	-	-	12' 4"	12' 4"	15' 10"	-	12' 3"	12' 3"	21' 5"
SI-2	3 ft <sup>2</sup>	4'	-	1"	1' 6"	-	-	4' 3"	-	-	-
SI-3	248 ft <sup>2</sup>	34' 2"	-	-	-	16' 9"	34' 2"	-	7' 9"	7' 9"	29' 2"
SI-4	274 ft <sup>2</sup>	26' 2"	-	1' 7"	1' 6"	15' 5"	7"	28' 9"	9' 5"	9' 5"	30' 5"
SI-5	555 ft <sup>2</sup>	41' 9"	-	28' 1"	-	33' 10"	22'	24' 6"	5' 10"	10' 7"	35' 8"
SI-6	301 ft <sup>2</sup>	46' 10"	-	-	-	16' 6"	-	-	23' 11"	20' 7"	23' 7"
SI-7	307 ft <sup>2</sup>	50' 2"	-	-	-	17' 4"	50' 2"	-	28' 1"	28' 1"	54' 1"
SI-8	68 ft <sup>2</sup>	-	21' 1"	-	-	6' 10"	20'	-	-	-	-
SI-9	92 ft <sup>2</sup>	13' 3"	-	1"	12' 4"	8' 5"	1' 11"	12'	-	-	-
SI-10	107 ft <sup>2</sup>	8'	-	22' 9"	-	16' 11"	-	9' 10"	-	-	-
SI-11	328 ft <sup>2</sup>	20' 1"	4' 3"	21'	-	12' 4"	-	26' 1"	5' 11"	5' 11"	12' 7"
Total*	2427 ft <sup>2</sup>	260' 4"	25' 5"	73' 8"	13' 10"	78' 5"	144' 8"	105' 5"	93' 3"	94' 7"	207'

\*Totals de-duplicate any line segments that are shared between multiple facades, and as a result may not represent a total summation of the corresponding column.

**Waste Factor Calculation**

Facade	Zero Waste	+10%	+15%	With Openings*	Openings* +10%	Openings* +15%
SI-1	144 ft <sup>2</sup>	158 ft <sup>2</sup>	166 ft <sup>2</sup>	188 ft <sup>2</sup>	207 ft <sup>2</sup>	216 ft <sup>2</sup>
SI-2	3 ft <sup>2</sup>	3 ft <sup>2</sup>	3 ft <sup>2</sup>	3 ft <sup>2</sup>	3 ft <sup>2</sup>	3 ft <sup>2</sup>
SI-3	248 ft <sup>2</sup>	273 ft <sup>2</sup>	285 ft <sup>2</sup>	286 ft <sup>2</sup>	315 ft <sup>2</sup>	329 ft <sup>2</sup>
SI-4	274 ft <sup>2</sup>	301 ft <sup>2</sup>	315 ft <sup>2</sup>	310 ft <sup>2</sup>	341 ft <sup>2</sup>	357 ft <sup>2</sup>
SI-5	555 ft <sup>2</sup>	611 ft <sup>2</sup>	638 ft <sup>2</sup>	598 ft <sup>2</sup>	658 ft <sup>2</sup>	688 ft <sup>2</sup>
SI-6	301 ft <sup>2</sup>	331 ft <sup>2</sup>	346 ft <sup>2</sup>	394 ft <sup>2</sup>	433 ft <sup>2</sup>	453 ft <sup>2</sup>
SI-7	307 ft <sup>2</sup>	338 ft <sup>2</sup>	353 ft <sup>2</sup>	388 ft <sup>2</sup>	427 ft <sup>2</sup>	446 ft <sup>2</sup>
SI-8	68 ft <sup>2</sup>	75 ft <sup>2</sup>	78 ft <sup>2</sup>	68 ft <sup>2</sup>	75 ft <sup>2</sup>	78 ft <sup>2</sup>
SI-9	92 ft <sup>2</sup>	101 ft <sup>2</sup>	106 ft <sup>2</sup>	92 ft <sup>2</sup>	101 ft <sup>2</sup>	106 ft <sup>2</sup>
SI-10	107 ft <sup>2</sup>	118 ft <sup>2</sup>	123 ft <sup>2</sup>	107 ft <sup>2</sup>	118 ft <sup>2</sup>	123 ft <sup>2</sup>
SI-11	328 ft <sup>2</sup>	361 ft <sup>2</sup>	377 ft <sup>2</sup>	343 ft <sup>2</sup>	377 ft <sup>2</sup>	394 ft <sup>2</sup>
<b>Total</b>	<b>2427 ft<sup>2</sup></b>	<b>2670 ft<sup>2</sup></b>	<b>2790 ft<sup>2</sup></b>	<b>2777 ft<sup>2</sup></b>	<b>3055 ft<sup>2</sup></b>	<b>3193 ft<sup>2</sup></b>

\*Openings measurements exclude any individual openings greater than 33 ft<sup>2</sup> (e.g. patio doors, garage doors).

### Windows

Opening	Width x Height	United Inches	Area
W-1	24" x 34"	58"	6 ft <sup>2</sup>
W-2	21" x 51"	72"	7 ft <sup>2</sup>
W-3	24" x 34"	58"	6 ft <sup>2</sup>
W-4	51" x 51"	102"	18 ft <sup>2</sup>
W-5	21" x 51"	72"	7 ft <sup>2</sup>
W-6	28" x 45"	73"	9 ft <sup>2</sup>
W-7	28" x 45"	73"	9 ft <sup>2</sup>
W-8	28" x 45"	73"	9 ft <sup>2</sup>
W-9	28" x 45"	73"	9 ft <sup>2</sup>
W-10	28" x 45"	73"	9 ft <sup>2</sup>
W-11	28" x 45"	73"	9 ft <sup>2</sup>
W-12	22" x 44"	66"	7 ft <sup>2</sup>
W-13	22" x 44"	66"	7 ft <sup>2</sup>
W-14	22" x 44"	66"	7 ft <sup>2</sup>
W-15	27" x 33"	60"	6 ft <sup>2</sup>
W-16	53" x 26"	79"	10 ft <sup>2</sup>
W-17	27" x 33"	60"	6 ft <sup>2</sup>

### Doors

Opening	Width x Height	Area
D-1	36" x 82"	20 ft <sup>2</sup>
D-2	96" x 84"	56 ft <sup>2</sup>
D-3	96" x 84"	56 ft <sup>2</sup>
D-4	60" x 80"	33 ft <sup>2</sup>
D-5	36" x 82"	20 ft <sup>2</sup>
<b>Total</b>	-	<b>185 ft<sup>2</sup></b>



**Windows (cont.)**

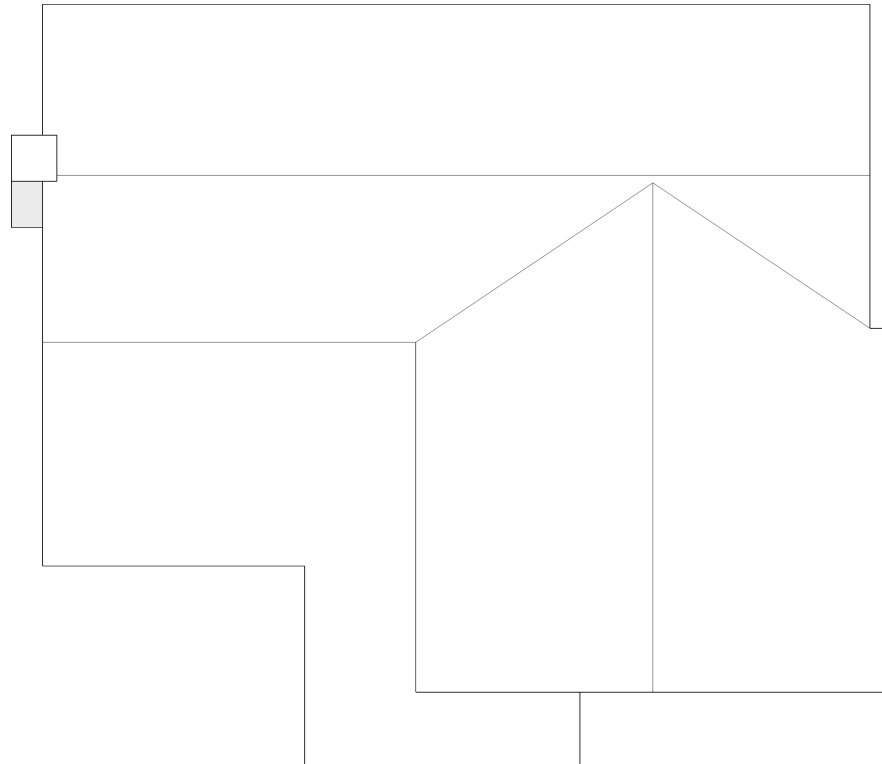
Opening	Width x Height	United Inches	Area
W-18	22" x 44"	66"	7 ft <sup>2</sup>
W-19	37" x 44"	81"	11 ft <sup>2</sup>
W-20	22" x 44"	66"	7 ft <sup>2</sup>
W-21	21" x 51"	72"	7 ft <sup>2</sup>
W-22	51" x 51"	102"	18 ft <sup>2</sup>
W-23	21" x 51"	72"	7 ft <sup>2</sup>
W-24	28" x 38"	66"	7 ft <sup>2</sup>
W-25	34" x 50"	84"	12 ft <sup>2</sup>
W-26	28" x 38"	66"	7 ft <sup>2</sup>
W-27	34" x 50"	84"	12 ft <sup>2</sup>
W-28	28" x 38"	66"	7 ft <sup>2</sup>
W-29	34" x 50"	84"	12 ft <sup>2</sup>
W-30	21" x 51"	72"	7 ft <sup>2</sup>
W-31	34" x 50"	84"	12 ft <sup>2</sup>
W-32	40" x 51"	91"	14 ft <sup>2</sup>
W-33	21" x 51"	72"	7 ft <sup>2</sup>
W-34	21" x 51"	72"	7 ft <sup>2</sup>

**Windows (cont.)**

Opening	Width x Height	United Inches	Area
W-35	50" x 23"	73"	8 ft <sup>2</sup>
Total	-	2570"	310 ft <sup>2</sup>

Roof	Area	Total	Length
Roof facets	2451 ft <sup>2</sup>	5	-
Ridges / Hips	-	2	80' 8"
Valleys	-	3	59'
Rakes	-	10	112' 3"
Gutters / Eaves	-	6	128' 1"
Flashing	-	3	10' 5"
Step Flashing	-	3	24' 7"

Roof Pitch	Area	Percentage
9/12	1114 ft <sup>2</sup>	45.46%
6/12	849 ft <sup>2</sup>	34.66%
4/12	487 ft <sup>2</sup>	19.89%

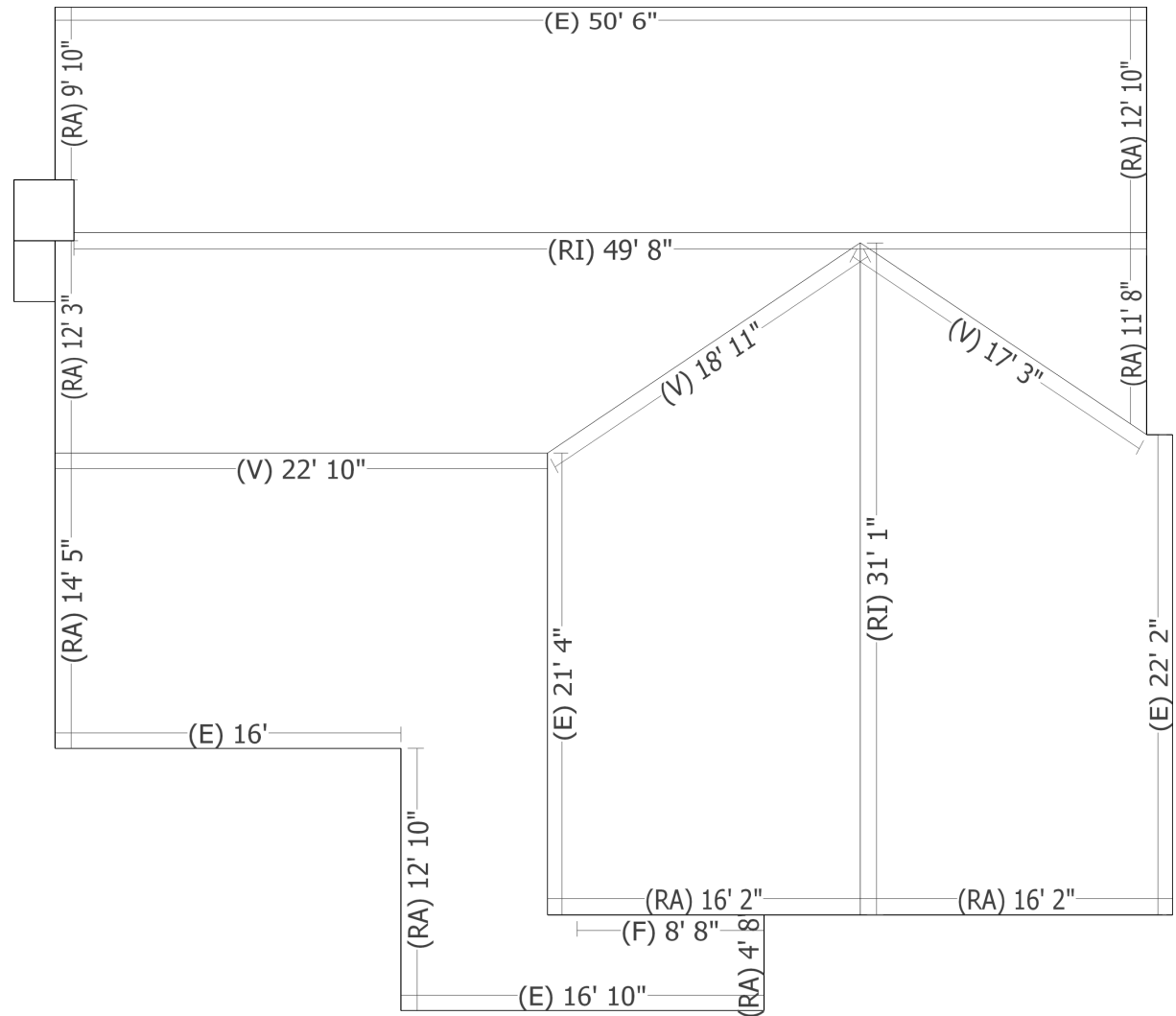


### Waste Factor Calculation

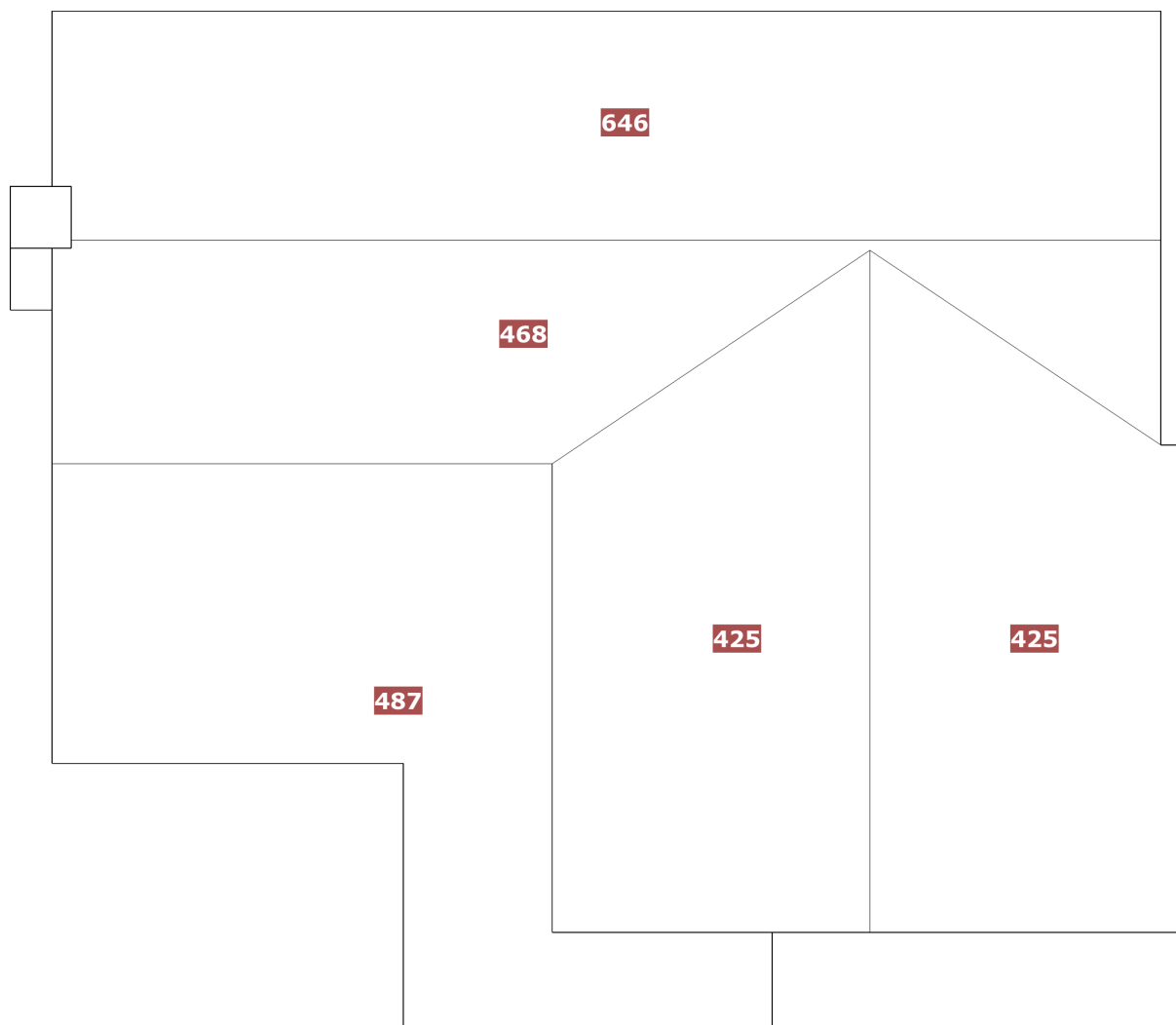
	Zero Waste	+5%	+10%	+15%	+20%
<b>Area</b>	2451 ft <sup>2</sup>	2574 ft <sup>2</sup>	2696 ft <sup>2</sup>	2819 ft <sup>2</sup>	2941 ft <sup>2</sup>
<b>Squares</b>	24 <sup>3</sup> / <sub>4</sub>	25 <sup>3</sup> / <sub>4</sub>	27	28 <sup>1</sup> / <sub>4</sub>	29 <sup>1</sup> / <sub>2</sub>

Roof	Length
Ridges (RI)	80' 8"
Hips (H)	-
Valleys (V)	59'
Rakes (RA)	112' 3"
Gutters / Eaves (E)	128' 1"
Flashing (F)*	10' 5"
Step Flashing (SF)*	24' 7"

\*Flashing and Step Flashing information are better accessible on the 3D reconstruction for this job



Roof	Facets	Total
Roof Facets	5	2451 ft <sup>2</sup>



Roof Pitch	Area	Percentage
9/12	1114 ft <sup>2</sup>	45.46%
6/12	849 ft <sup>2</sup>	34.66%
4/12	487 ft <sup>2</sup>	19.89%

