



| Areas | Siding | Other |
|---------------------|----------------------------|---------------------------|
| Facades | 2591 ft ² | 621 ft ² |
| Openings | 190 ft ² | 79 ft ² |
| Unknown (no photos) | - | 0 ft ² |
| Total | 2781 ft² | 700 ft² |

| Corners | Siding | Other |
|---|---------|-------|
| Inside Qty | 3 | - |
| Inside Length ● | 57' 3" | - |
| Outside Qty | 9 | - |
| Outside Length ● | 146' 1" | - |

HOVER KEY



This key is not a representation of the building contained in this report. It is strictly for reference.

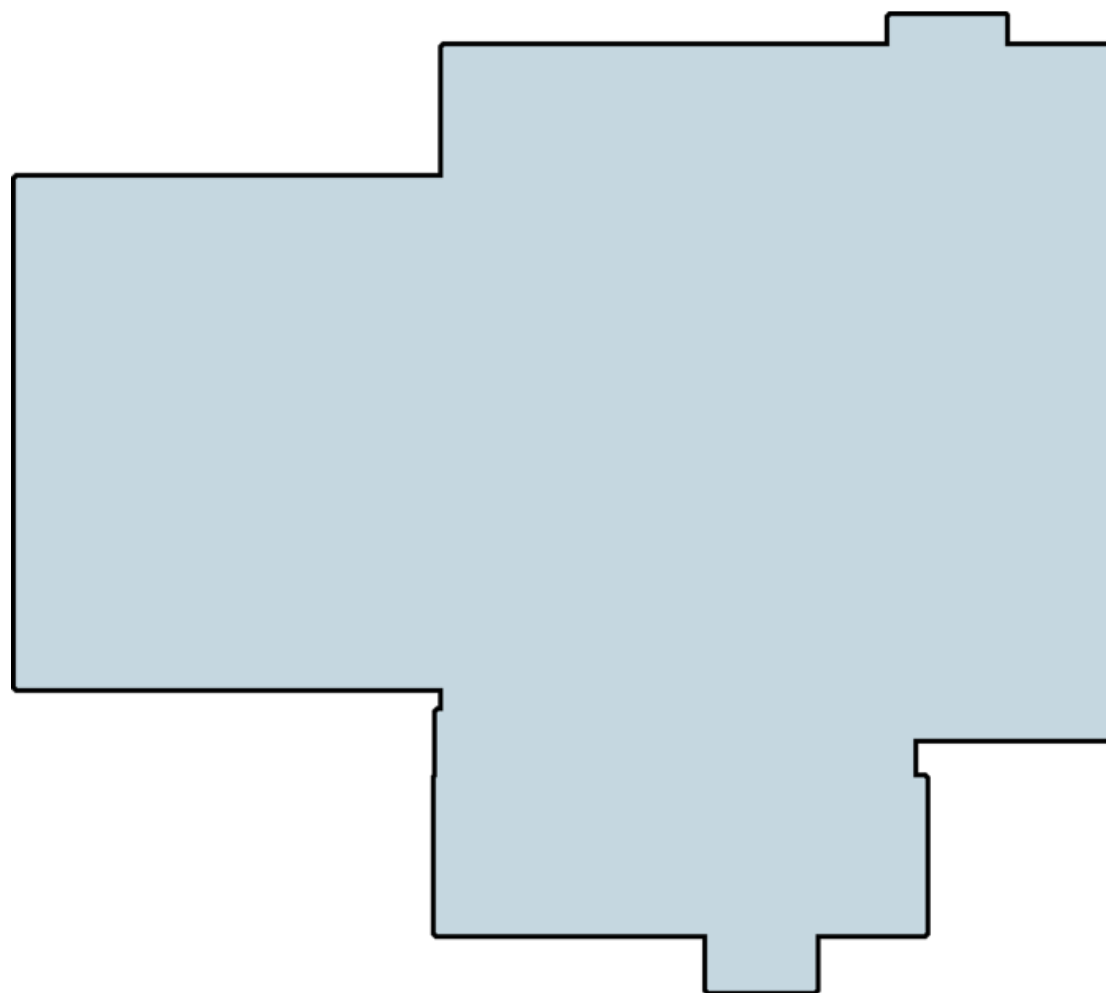
| Trim | Siding | Other |
|---|----------|---------|
| Level Starter ● | 180' 11" | 311' 5" |
| Sloped Trim ● | 29' 11" | 60' 8" |
| Vertical Trim ● | 114' 3" | 250' 3" |

| Roofline | Length | Avg. Depth | Soffit Area |
|--|----------|------------|---------------------|
| Eaves Fascia (Gutters) ● | 127' 11" | - | - |
| Level Frieze Board | 148' 10" | 1' 7" | 229 ft ² |
| Rakes Fascia ● | 148' 10" | - | - |
| Sloped Frieze Board | 130' | 8" | 87 ft ² |

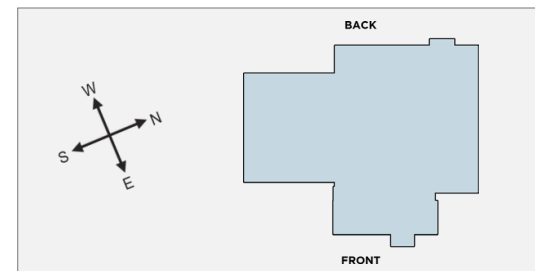
| Openings | Siding | Other |
|--------------|---------|--------|
| Quantity | 17 | 7 |
| Tops Length | 44' 7" | 11' |
| Sills Length | 40' 10" | 16' 8" |
| Sides Length | 129' 6" | 41' 2" |

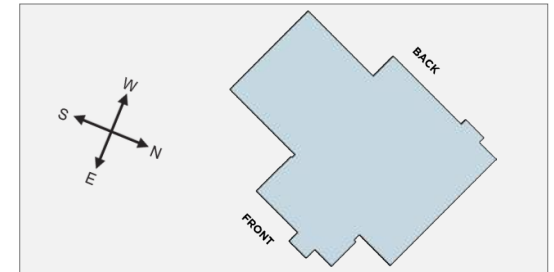
| Accessories | Siding | Other |
|--------------|--------------------|-------------------|
| Shutter Qty | 7 | 0 |
| Shutter Area | 30 ft ² | 0 ft ² |
| Vents Qty | 4 | 0 |
| Vents Area | 15 ft ² | 0 ft ² |

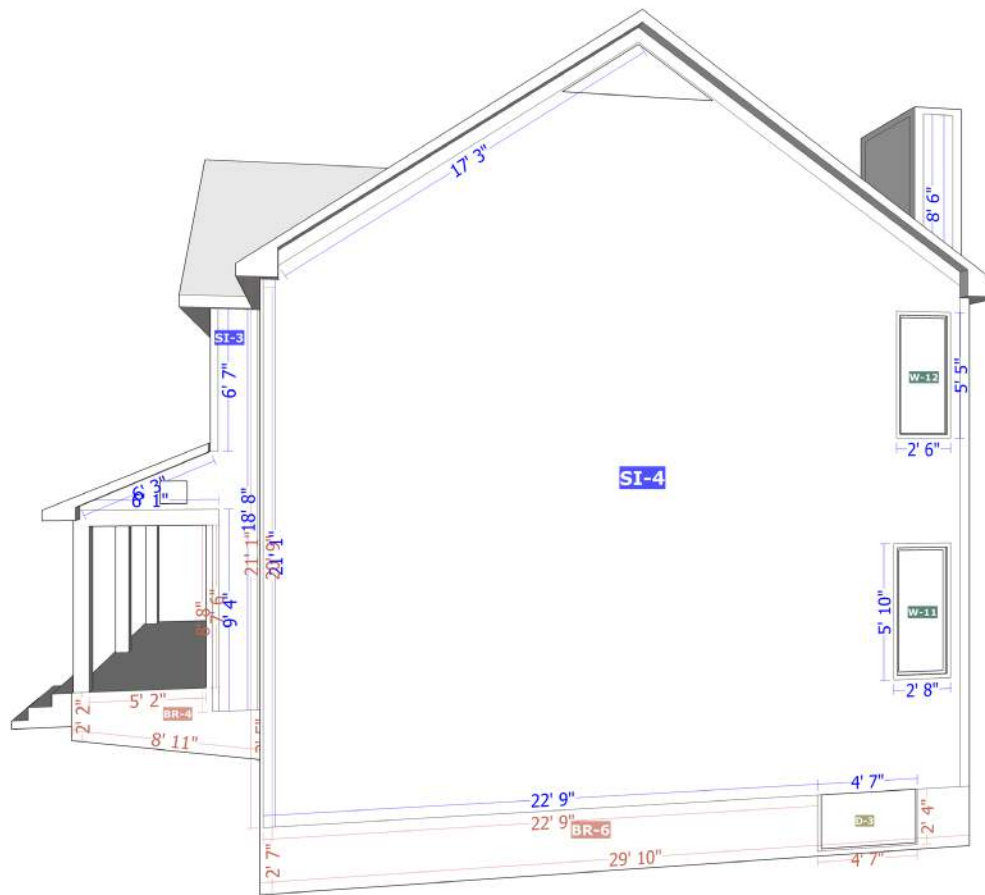
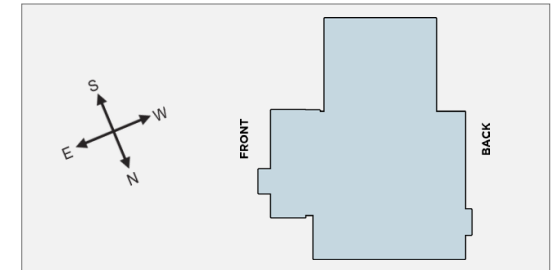
BACK

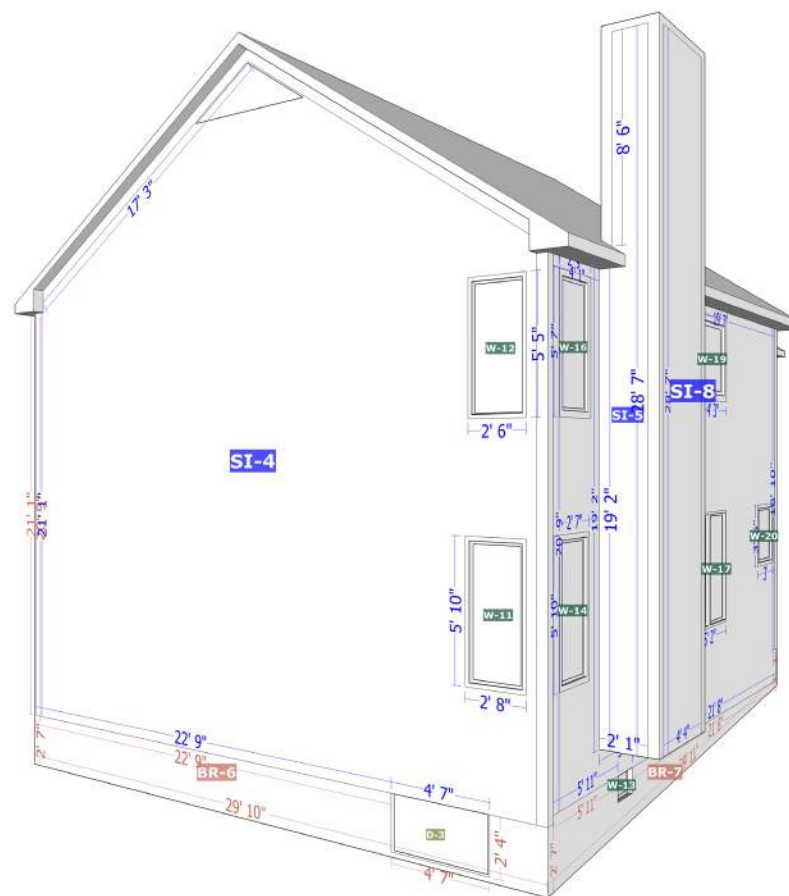
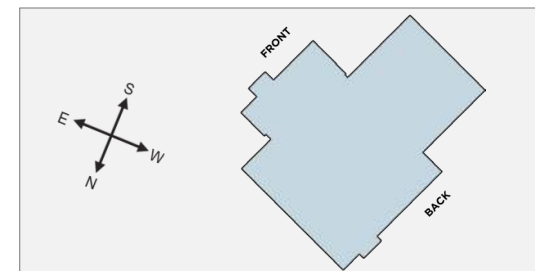


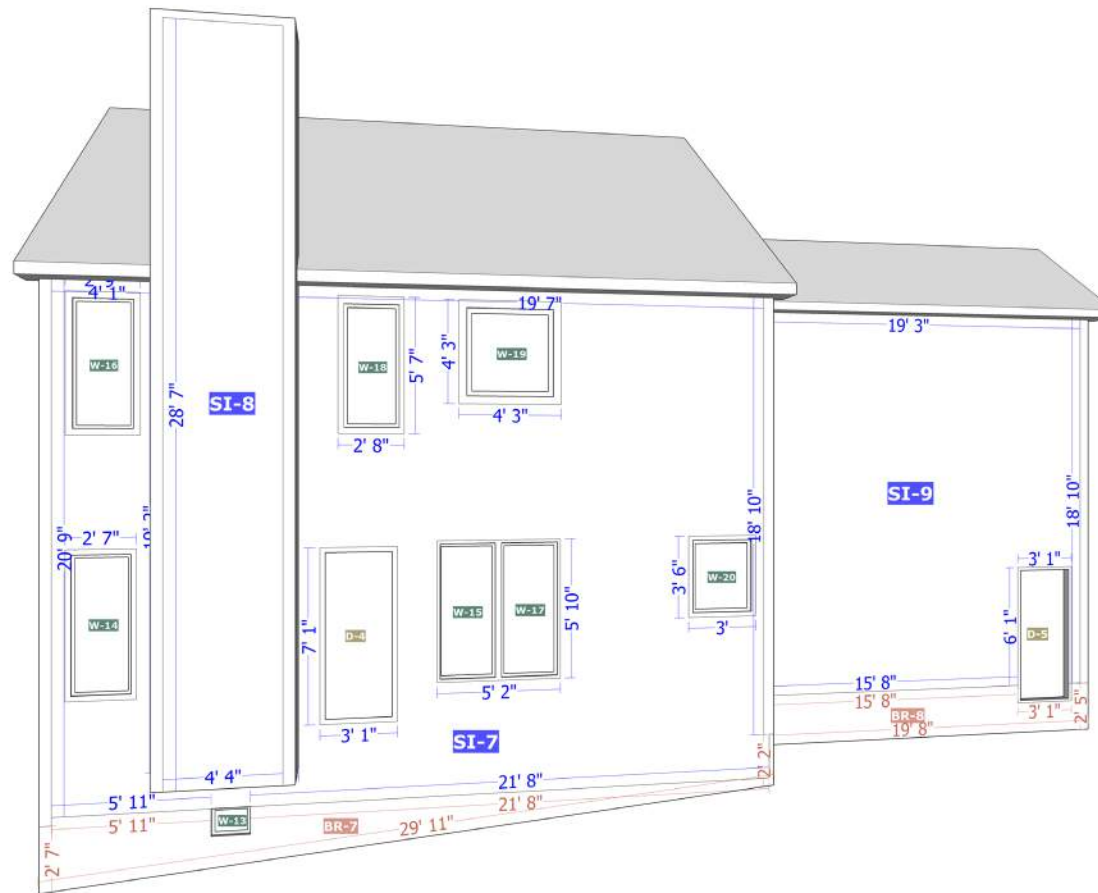
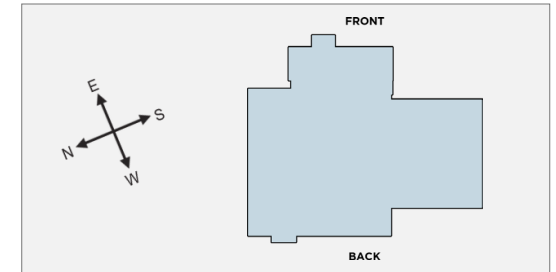
FRONT

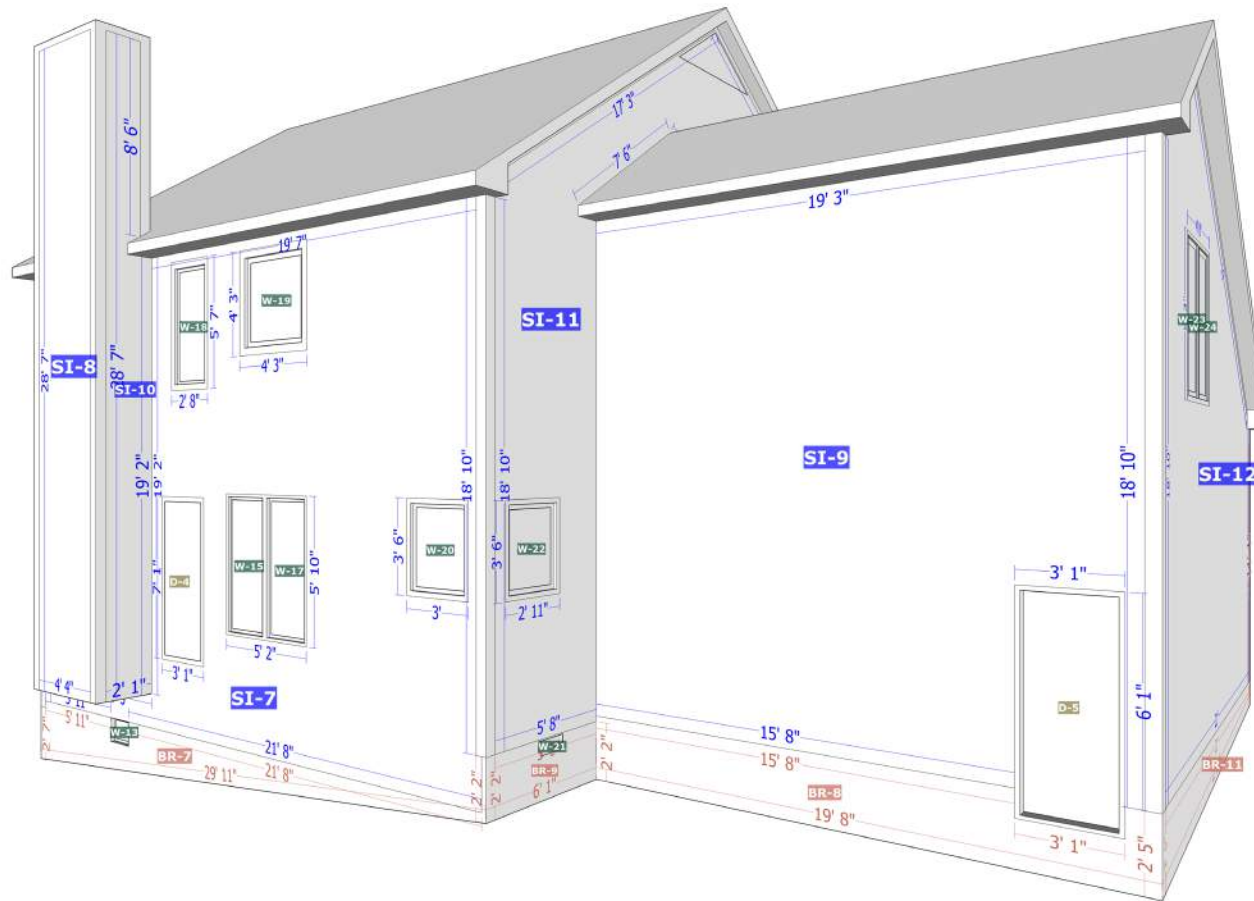
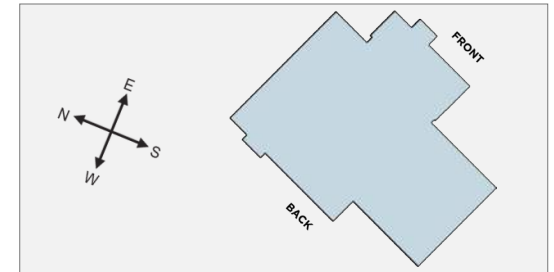


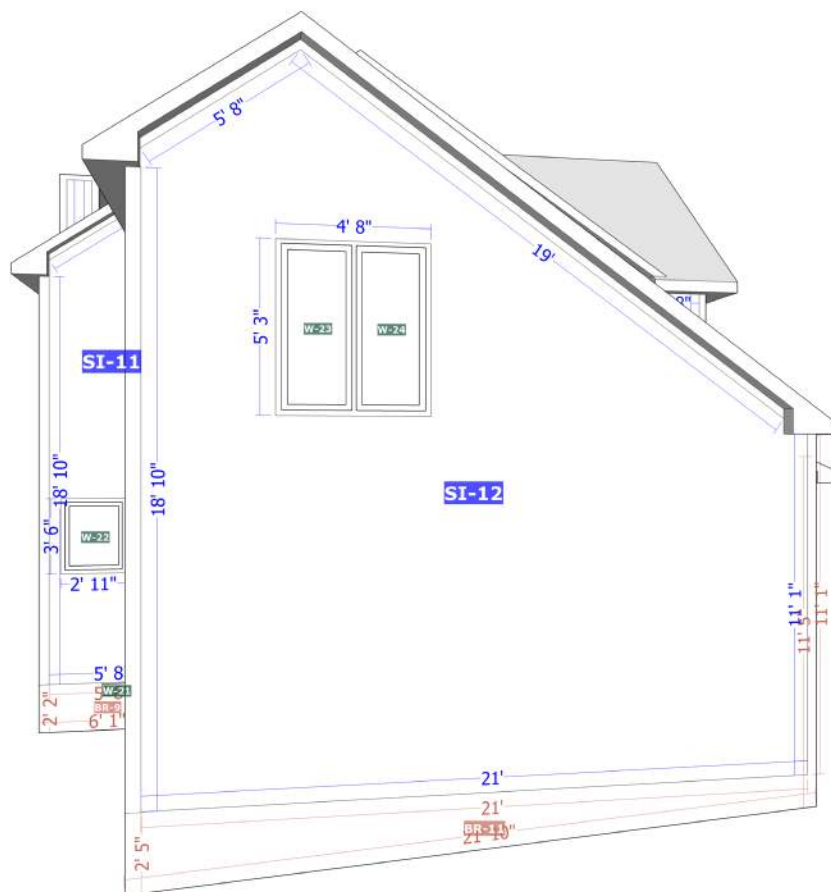
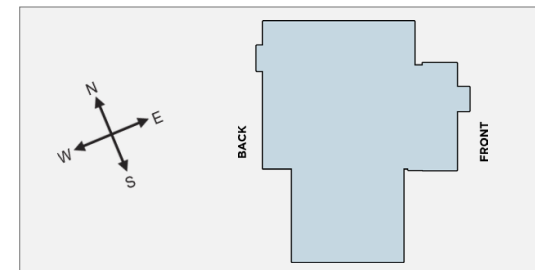


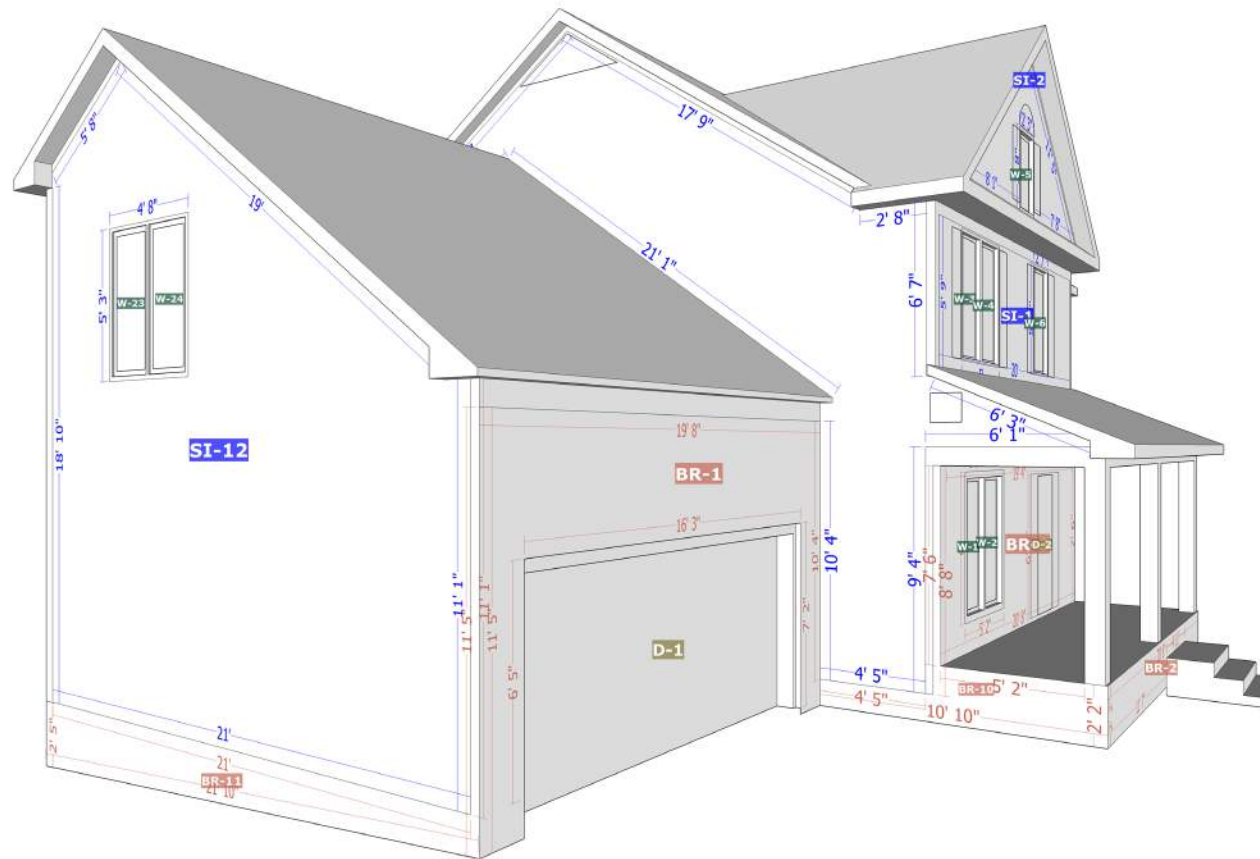
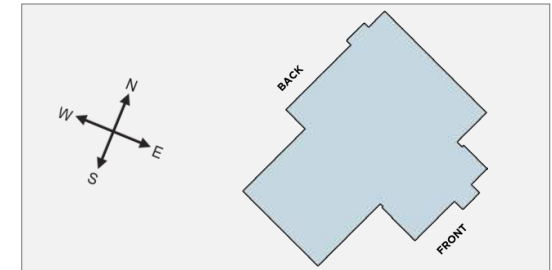












Siding

| Facade | Area | Inside Corners | Outside Corners | Openings | Shutters | Vents |
|--------------|----------------------------|----------------|-----------------|-----------|----------|----------|
| SI-1 | 75 ft ² | 0 | 2 | 3 | 4 | 0 |
| SI-2 | 59 ft ² | 0 | 0 | 1 | 3 | 0 |
| SI-3 | 42 ft ² | 0 | 1 | 0 | 0 | 1 |
| SI-4 | 740 ft ² | 0 | 1 | 2 | 0 | 1 |
| SI-5 | 53 ft ² | 1 | 2 | 0 | 0 | 0 |
| SI-6 | 36 ft ² | 0 | 2 | 0 | 0 | 0 |
| SI-7 | 373 ft ² | 2 | 2 | 8 | 0 | 0 |
| SI-8 | 123 ft ² | 0 | 2 | 0 | 0 | 0 |
| SI-9 | 343 ft ² | 1 | 1 | 0 | 0 | 0 |
| SI-10 | 53 ft ² | 1 | 2 | 0 | 0 | 0 |
| SI-11 | 347 ft ² | 1 | 2 | 1 | 0 | 2 |
| SI-12 | 347 ft ² | 0 | 1 | 2 | 0 | 0 |
| Total | 2591 ft² | 6 | 18 | 17 | 7 | 4 |

Brick

| Facade | Area | Openings | Shutters | Vents |
|--------------|---------------------------|----------|----------|----------|
| BR-1 | 104 ft ² | 0 | 0 | 0 |
| BR-2 | 38 ft ² | 0 | 0 | 0 |
| BR-3 | 90 ft ² | 2 | 0 | 0 |
| BR-4 | 24 ft ² | 0 | 0 | 0 |
| BR-5 | 131 ft ² | 4 | 0 | 0 |
| BR-6 | 68 ft ² | 0 | 0 | 0 |
| BR-7 | 47 ft ² | 1 | 0 | 0 |
| BR-8 | 45 ft ² | 0 | 0 | 0 |
| BR-9 | 13 ft ² | 0 | 0 | 0 |
| BR-10 | 20 ft ² | 0 | 0 | 0 |
| BR-11 | 41 ft ² | 0 | 0 | 0 |
| Total | 621 ft² | 7 | 0 | 0 |

Facades

| Facade | Area | Trim | | | Corners | | Roofline | | Openings | | |
|--------|----------------------|---------------|---------|----------|---------|---------|--------------------|---------------------|----------|---------|---------|
| | | Level Starter | Sloped | Vertical | Inside | Outside | Level Frieze Board | Sloped Frieze Board | Tops | Sills | Sides |
| SI-1 | 75 ft ² | 20' | - | - | - | 12' 6" | 20' | - | 7' 7" | 7' 7" | 21' 2" |
| SI-2 | 59 ft ² | 15' 9" | - | - | - | - | - | 23' 5" | 2' 3" | - | 7' 5" |
| SI-3 | 42 ft ² | 7' 10" | - | 28' 2" | - | 6' 3" | 2' 2" | 6' 3" | - | - | - |
| SI-4 | 740 ft ² | 29' 3" | - | 22' 1" | - | 21' 1" | 7" | 34' 6" | 5' 2" | 5' 2" | 22' 5" |
| SI-5 | 53 ft ² | 2' 1" | 8" | 6" | 19' 2" | 37' 5" | 2' 7" | - | - | - | - |
| SI-6 | 36 ft ² | 4' 4" | - | - | - | 17' 1" | 4' 4" | - | - | - | - |
| SI-7 | 373 ft ² | 39' | - | 16' 1" | 38' 5" | 39' 11" | 23' 11" | - | 21' 11" | 20' 5" | 61' |
| SI-8 | 123 ft ² | 4' 4" | - | - | - | 57' 10" | 4' 4" | - | - | - | - |
| SI-9 | 343 ft ² | 19' 3" | - | 12' 1" | 18' 10" | 18' 10" | 19' 3" | - | - | - | - |
| SI-10 | 53 ft ² | 2' 1" | 8" | 6" | 19' 2" | 37' 5" | 2' 7" | - | - | - | - |
| SI-11 | 347 ft ² | 16' 1" | 28' 7" | 22' 8" | 18' 10" | 25' 1" | 4' 8" | 41' 3" | 2' 11" | 2' 11" | 7' |
| SI-12 | 347 ft ² | 21' 1" | - | 12' 2" | - | 18' 10" | 10" | 24' 8" | 4' 8" | 4' 8" | 10' 7" |
| Total* | 2591 ft ² | 180' 11" | 29' 11" | 114' 3" | 57' 3" | 146' 1" | 85' 2" | 130' | 44' 7" | 40' 10" | 129' 6" |

*Totals de-duplicate any line segments that are shared between multiple facades, and as a result may not represent a total summation of the corresponding column.

Waste Factor Calculation

| Facade | Zero Waste | +10% | +20% | With Openings* | Openings* +10% | Openings* +20% |
|--------------|----------------------------|----------------------------|----------------------------|----------------------------|----------------------------|----------------------------|
| SI-1 | 75 ft ² | 83 ft ² | 90 ft ² | 111 ft ² | 122 ft ² | 133 ft ² |
| SI-2 | 59 ft ² | 65 ft ² | 71 ft ² | 67 ft ² | 74 ft ² | 80 ft ² |
| SI-3 | 42 ft ² | 46 ft ² | 50 ft ² | 42 ft ² | 46 ft ² | 50 ft ² |
| SI-4 | 740 ft ² | 814 ft ² | 888 ft ² | 766 ft ² | 843 ft ² | 919 ft ² |
| SI-5 | 53 ft ² | 58 ft ² | 64 ft ² | 53 ft ² | 58 ft ² | 64 ft ² |
| SI-6 | 36 ft ² | 40 ft ² | 43 ft ² | 36 ft ² | 40 ft ² | 43 ft ² |
| SI-7 | 373 ft ² | 410 ft ² | 448 ft ² | 460 ft ² | 506 ft ² | 552 ft ² |
| SI-8 | 123 ft ² | 135 ft ² | 148 ft ² | 123 ft ² | 135 ft ² | 148 ft ² |
| SI-9 | 343 ft ² | 377 ft ² | 412 ft ² | 343 ft ² | 377 ft ² | 412 ft ² |
| SI-10 | 53 ft ² | 58 ft ² | 64 ft ² | 53 ft ² | 58 ft ² | 64 ft ² |
| SI-11 | 347 ft ² | 382 ft ² | 416 ft ² | 356 ft ² | 392 ft ² | 427 ft ² |
| SI-12 | 347 ft ² | 382 ft ² | 416 ft ² | 371 ft ² | 408 ft ² | 445 ft ² |
| Total | 2591 ft² | 2850 ft² | 3110 ft² | 2781 ft² | 3059 ft² | 3337 ft² |

*Openings measurements exclude any individual openings greater than 33 ft² (e.g. patio doors, garage doors).

Windows

| Opening | Width x Height | United Inches | Area |
|---------|----------------|---------------|--------------------|
| W-1 | 29" x 67" | 96" | 13 ft ² |
| W-2 | 29" x 67" | 96" | 13 ft ² |
| W-3 | 28" x 62" | 90" | 12 ft ² |
| W-4 | 28" x 62" | 90" | 12 ft ² |
| W-5 | 26" x 43" | 69" | 8 ft ² |
| W-6 | 28" x 62" | 90" | 12 ft ² |
| W-7 | 29" x 67" | 96" | 13 ft ² |
| W-8 | 29" x 67" | 96" | 13 ft ² |
| W-9 | 28" x 62" | 90" | 12 ft ² |
| W-10 | 29" x 67" | 96" | 13 ft ² |
| W-11 | 29" x 67" | 96" | 13 ft ² |
| W-12 | 29" x 67" | 96" | 13 ft ² |
| W-13 | 20" x 15" | 35" | 2 ft ² |
| W-14 | 29" x 67" | 96" | 13 ft ² |
| W-15 | 29" x 67" | 96" | 13 ft ² |
| W-16 | 28" x 62" | 90" | 12 ft ² |
| W-17 | 29" x 67" | 96" | 13 ft ² |

Doors

| Opening | Width x Height | Area |
|--------------|----------------|---------------------------|
| D-1 | 192" x 84" | 112 ft ² |
| D-2 | 32" x 80" | 18 ft ² |
| D-3 | 60" x 80" | 33 ft ² |
| D-4 | 32" x 80" | 18 ft ² |
| D-5 | 32" x 80" | 18 ft ² |
| Total | - | 199 ft² |

Windows (cont.)

| Opening | Width x Height | United Inches | Area |
|--------------|----------------|---------------|---------------------|
| W-18 | 28" x 62" | 90" | 12 ft ² |
| W-19 | 43" x 43" | 86" | 13 ft ² |
| W-20 | 32" x 39" | 71" | 9 ft ² |
| W-21 | 20" x 11" | 31" | 2 ft ² |
| W-22 | 32" x 39" | 71" | 9 ft ² |
| W-23 | 28" x 62" | 90" | 12 ft ² |
| W-24 | 28" x 62" | 90" | 12 ft ² |
| Total | - | 2043" | 269 ft ² |

